

# Getting Started with CBRE's Global Data Platform

Welcome! We are pleased to have you join us as a new member of CBRE's Global Forecasting and Analytics platform, powered by CBRE Econometric Advisors (EA). Below is an essential guide to utilizing our platform.

## Platform Access

You should have received an email detailing your platform username and password. These credentials will give you access to the platform (cbre-ea.com) in addition to our platform applications.

If you did not receive your username and password or forgot or misplaced your credentials, please email [GlobalData\\_Helpdesk@cbre.com](mailto:GlobalData_Helpdesk@cbre.com).

The CBRE Global Data platform is browser based and can be accessed via the following login options:

### North America Subscribers

EA Dashboard: [www.cbre-ea.com](http://www.cbre-ea.com)

Builder: [builder.cbre.com](http://builder.cbre.com)

Locator 2.0: [ealocator2.cbre.com/auth/login](http://ealocator2.cbre.com/auth/login)

### iProjects Subscribers

EA Dashboard via 'My EA' Tab:  
[www.cbre-ea.com](http://www.cbre-ea.com)

### EMEA & APAC Subscribers

Builder: [builder.cbre.com](http://builder.cbre.com)

Further details on the platform applications and EA Dashboard content can be found on pages 3-7.

## Email Alerts

Our team of economists and data scientists power quarterly data updates as well as frequent research and insights. All subscribers receive email notifications upon data availability on the platform, as well as when we publish new research and insights. The email notifications you receive will vary depending on your subscription.

# Platform Navigation

Let's get familiar with the platform. After logging in, you have direct access to:

## North America Subscribers

EA Dashboard & Platform Apps

- Release Calendar
- Quarterly Reports & Standardized Files
- Latest Research & Insights

## EMEA Subscribers

Builder Only

- Release Calendar
- Quarterly Reports & Standardized Files
- Global Publications

## APAC Subscribers

Builder Only

- Release Calendar
- Standardized Files
- Global Publications

# North America Dashboard

The screenshot shows the CBRE North America Dashboard. At the top, there is a navigation bar with 'ABOUT', 'SERVICES', 'EA INSIGHTS', and 'MY EA'. The dashboard includes a 'Dashboard Controls' section with a 'United States' dropdown. Below this are tabs for 'OFFICE', 'INDUSTRIAL', 'RETAIL', 'APARTMENT', and 'HOTEL'. A 'REPORTS & WEB TOOLS' section lists various reports like 'EA Flash Report', 'Macro Outlook & Forecast Scenarios', 'Overview & Outlook', 'Investment Outlook', 'Cap Rate Dynamics', and 'The Full Picture', along with 'DataViews', 'Peer Select', 'Mapmatics', 'Builder', and 'Locator'. A 'DATA EXTRACTS' section is also present. A 'DOCUMENTATION' section is visible. A 'CONTACT' section lists staff members under 'Research' and 'Client Care'. A 'Global Help Desk' is at the bottom. On the right, there is a 'Product Release Calendar' and an 'EA Insights' section with articles like 'More Signs of Thawing in the Office Capital Markets' and 'In Austin, Momentum Shifts to New Multifamily Neighborhoods'.

1. Dashboard Controls
2. U.S. Reports
3. Platform Applications
4. Data Extracts
5. Documentation
6. Contacts
7. 'My EA' Menu Tab
8. Release Calendar
9. Latest Insights

\*Details provided on the next page.

This close-up shows the 'MY EA' menu dropdown. It contains the following items: 'Data Views', 'Peer Select', 'Mapmatics', 'Builder', 'Locator', 'NEW! Locator 2.0', 'Presentations', 'Release Calendar', 'iProjects', 'Custom Downloads', and 'Log out'.

# North America Dashboard Overview

Available to U.S. and Canada subscribers. Access to the reports and applications on the Dashboard will vary depending on your subscription.

## 1. Dashboard Controls

- **Sub-Region:** use the dropdown to select United States or Canada Dashboard view.
- **Property Sector:** use the tabs to view reports and resources available for a property sector within the selected sub-region.

## 2. U.S. Reports

- **EA Flash Reports:** quarterly pre-liminary forecast briefs to give you an idea of what to expect in the forecasts and availability/vacancy index data.
- **Macro Outlook & Forecast Scenarios Report:** quarterly report covering macroeconomic drivers and their impacts on each property sector.
- **Sector Overview & Outlook Reports:** quarterly individual reports for each property sector covering drivers, forecasts, macro assumptions, fundamentals, and top takeaways.
- **Investment Outlook Report:** quarterly outlook report focused on capital markets drivers, forecasts, macro assumptions, fundamentals, and top takeaways.
- **The Full Picture Report:** quarterly flagship report providing the overarching macroeconomic and commercial real estate outlook with dedicated sector chapters.

## 3. Platform Applications

- **Builder:** access our Builder Global Database to create reports and download standardized files for North America, EMEA, and APAC.
- **Locator 2.0:** visualize U.S. data through hexagon and submarket heat maps, performance dashboards, and trends reports. Apply filters for location and property characteristics to view analytics for a subset of U.S. properties. *Note: filtering capabilities are a premium feature and not available to all U.S. subscribers.*
- **DataViews:** browse through a library of off-shelf U.S. and Canada reports and bulk download to Excel.
- **Peer Select:** apply filters for location and property characteristics to view analytics for a subset of U.S. properties. **For an enhanced experience, we recommend using the modernized version of this tool available in Locator 2.0 through the Building Analytics feature.** *Note: Peer Select is a premium tool and not available to all U.S. subscribers.*

- **Mapmatics:** customize and download U.S. heat maps. For an enhanced experience, we recommend using the modernized version of this tool available through Locator 2.0.

#### 4. Data Extracts

- Access standardized CSV files of U.S. and Canada data, including market and submarket history and forecasts, investment performance, projects under construction and zip code to submarket mapping.

#### 5. Documentation

- Download our forecast methodology, forecast back-testing results, and data dictionary for the U.S. property sectors.

#### 6. Contact Information

- Our team of economists and real estate experts are available to answer any questions our clients might have. The contacts section of the dashboard gives you all the necessary information you need to reach out to the right U.S. or Canada sector economist to assist you. Any questions relating to EMEA or APAC should be directed to the [GlobalData\\_Helpdesk@cbre.com](mailto:GlobalData_Helpdesk@cbre.com).

#### 7. 'My EA' Menu Tab

- This dropdown includes links to the Canada Historical iProjects database and our Custom Downloads page. If your team receives an U.S. or Canada custom file from us, it will be available for download on the Custom Downloads page. Links to our platform applications and release calendar are also available through this dropdown.

#### 8. Release Calendar

- View our quarterly target release dates for U.S. and Canada datasets and publications.

#### 9. Latest Insights

- Access to our latest published U.S. research and insights.

# Builder Global Database

The screenshot displays the CBRE Builder Global Database interface. The top navigation bar includes 'CBRE', 'My Reports', 'Market Definitions', 'Resources', and 'NEW Locator 2.0'. The main interface is divided into several sections:

- Region:** A dropdown menu showing 'Americas', 'APAC', and 'EMEA'. A callout '3' points to the 'My Reports' link.
- Reports Builder:** A section with 'Reports Builder' and 'Investment Volumes' tabs. A callout '2' points to the 'Investment Volumes' tab.
- Sectors & Markets:** A section with icons for Office, Industrial, Retail, Hotel, Residential, and Economy.
- All Geographies:** A section with a search bar and a list of geographies. A callout '1' points to the 'Western Europe' section.
- Report Type:** A section with 'Time Series' and 'Quarterly'/'Annual' options.
- Datasets:** A section with 'Specific Year' and 'Start Quarter'/'End Quarter' options.
- All DataPoints (358):** A table with columns for 'DataPoints', 'Concept', and 'Dataset'. A callout '5' points to the 'DataPoints' column.
- Resources:** A modal window with tabs for 'Reports Library', 'Documentation', 'Standardized Downloads', 'Custom Reports', and 'Global Publications'. A callout '4' points to the 'Reports Library' tab. Below the tabs, there is a 'Region\*' dropdown set to 'EMEA' and a table of 'Available Files (8)'. The table has columns for 'FileName', 'CreatedDate', and 'Edition'. A callout '6' points to the 'Global Publications' tab.

1. Reports Builder Criteria Filters
2. Europe Investment Volumes Dashboard
3. My Reports
4. Resources
5. Release Calendar
6. Contact Support

\*Details provided on the next page.

# Builder Global Database Overview

Available for all subscribers.  
Access will vary depending on your  
Subscription.

## 1. Reports Builder Criteria Filters

- **Region, Sectors & Markets:** select the region, sector, and markets to include in your report.
- **Report Type:** establish the report type criteria by selecting Quarterly or Annual and adjusting the time series start and end year as needed.
- **Datapoints:** select datapoints to include in your report. Apply filters for dataset, currency & measurement, variable grouping, concept, forecast scenario, sub-property type or property classification to make datapoint discovery easier.
- **Report Options:** include additional data in your report or change the report layout.

## 2. Europe Investment Volumes Dashboard

- Apply filters for sector, currency, and time series length to view and download Europe Investment Volumes by country, city, or purchaser origin.

## 3. My Reports

- **Load and Download Saved Reports:** streamline your workflow and save your new reports to your profile to use again in the future. Select a saved report to load into Builder and download with the latest data.
- **Share Saved Reports:** select a saved report to share with teammates who also have a Builder login.

## 4. Resources

- **Reports Library:** access our collection of U.S. and Canada standardized files to quickly obtain historical and forecast data. Select a file to download “as-is” or make customizations to the file before you download.
- **Documentation:** download documentation by region, including our U.S. and EMEA & APAC data dictionaries. EMEA and APAC subscribers can also access the link to our ERIX to Builder Migration Hub through this Documentation tab. If you are an EMEA or APAC subscriber, we encourage you to visit the Migration Hub to view Builder FAQs and additional training resources, including a navigation overview, in-depth user guide, and training video.
- **Standardized Downloads:** download EMEA standardized files, including Europe Investment Volumes, Europe VAS Monthly Yields, European Macro Outlook report, and Europe Full Picture report.

- **Custom Reports:** if your team receives an EMEA or APAC bespoke file from us, it will be available for download on the Bespoke Extracts page under the Report Type Options dropdown.
- **Global Publications:** access the link to additional CBRE Global and Local Market Research Publications.

## 5. Release Calendar

- View release dates for EMEA and APAC historical and forecast data.

## 6. Contact Support

- We are available to answer any questions our clients might have. Use the envelope icon to send an email to our [Global Help Desk](#).



## Meet the Team

### Client Services



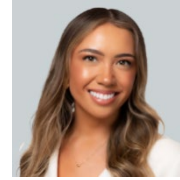
**Stephanie Marthakis**  
Senior Director  
+1 801 869 8067  
[stephanie.marthakis@cbre.com](mailto:stephanie.marthakis@cbre.com)



**Alison Grimaldi**  
Principal Account Manager  
+1 617 912 5248  
[alison.grimaldi@cbre.com](mailto:alison.grimaldi@cbre.com)



**Meghan Phillips**  
Account Executive  
+1 617 912 5244  
[meghan.phillips@cbre.com](mailto:meghan.phillips@cbre.com)



**Hannah Fincham**  
Account Executive  
+44 7385 479265  
[hannah.fincham@cbre.com](mailto:hannah.fincham@cbre.com)

### Leadership



**Dennis Schoenmaker, Ph.D.**  
Global Head of Forecasting  
& Strategic Insight  
[dennis.schoenmaker@cbre.com](mailto:dennis.schoenmaker@cbre.com)



**Kasia Dziejulska**  
Head of Global Research  
Operations  
[kasia.dziejulska@cbre.com](mailto:kasia.dziejulska@cbre.com)

### General Questions or Assistance

If you have any questions or need assistance, email our support team at [GlobalData\\_Helpdesk@cbre.com](mailto:GlobalData_Helpdesk@cbre.com).

### Useful Hyperlinks

[www.cbre-ea.com](http://www.cbre-ea.com) (North America data only)

[Locator 2.0](#) (U.S. data only)

[Builder](#) (Global data)

[EA Insights](#) (Published reports)